

Xerox® PrimeLink C9065/C9070 Printer

Customer Expectation and Installation Guide

28 FEB 2020



PrimeLink C9065/C9070 Customer Expectation and Installation Guide

Product Overview	3
Product Highlights	3
Detailed Specification Summaries	4
Average Monthly Print Volume and Duty Cycle	4
System Specifications	4
Assessories.....	5
Electrical Basics.....	6
Power Basics	6
Operation Environment	6
Dimensions.....	6
Certifications.....	7
Paper Handling	7
Finishing Facts.....	8
Printing Basic Facts.....	11
Copy Basic Facts.....	12
Scanning Basic Facts.....	13
Device Management	14
Security	15
Print Servers / Digital Front Ends	15
Two-Sided Maximum Paper Weights.....	19
One-Sided Maximum Paper Weights	19
Heavyweight and Banner Tray Kit (Optional MSI Tray)	20
Envelope Considerations	21
Envelope Feeding Guidelines.....	21
Finishing Specifications	22
Xerox Sustainability.....	25
Support Services and Contacts.....	25
Installation Responsibility Matrix	26
Installation Planning	28
Operating Environment.....	28
Electrical Requirements	28
Physical Space Requirements.....	30
Installation Considerations.....	35
Energy Star	35
Supplies.....	36
Customer Agreement	36

Introduction and Overview

This document is intended to help you understand the performance and capabilities of the Xerox PrimeLink C9065/C9070 Printer. As indicated by the cover stamping, this document contains product specifications and other information that is proprietary to Xerox.

The Customer Expectation and Installation Addendum (CEIG), is intended to assist in setting proper expectations and provide general guidelines and “Best Practices”.

Date	Change Log
2019-OCT	Initial Version
2020-JAN	Minor updates, finishers updated, formatting changes
2020-FEB	Inserters references simplified and paperweights updated

Product Overview

The C9070C9065/C9070 offers a wide range of applications due to low melt toner and a straight paper path. The PrimeLink family reliably runs synthetics, plastics, window clings, carbonless paper, transfer papers and many other unique applications. The C9070C9065/C9070 also produces image quality that is benchmark compared. True 2400 x 2400 dots per inch that enables the best images in class with wide color gamut and color consistency from print to print and job to job.

Product Highlights

The PrimeLink C9000 is compact and powerful—at 70 ppm. Wide media latitude, with the ability to print on stocks and specialty media from 60–350 gsm (one-sided, 256 gsm two-sided) Image quality controls create error-free output.

- High-performance features combine with the convenience and walkup simplicity of scanning, copying and even on-board Xerox ConnectKey Apps.
- Feeding and inline finishing versatility create opportunities for the higher-margin, higher-profit applications.
- Single-pass Scanner: Up to 270 images per minute (ipm)
- Resolution: 2400 x 2400 dpi
- Toner: Xerox® Emulsion Aggregation (EA) Toner with ultra-low melt Technology



Detailed Specification Summaries

Average Monthly Print Volume and Duty Cycle

(i) <i>Print Speed and Monthly Volume</i>	C9065	C9070
Simplex Speed B&W/Color	Up to 70 /65 ppm	Up to 75 / 70 ppm
Recommended Average Monthly Print Volume ¹	10,000-60,000 pages	10,000-60,000 pages
Maximum Monthly Duty Cycle ²	Up to 300,000 pages	Up to 300,000 pages

Duty Cycle

Duty Cycle is a print device’s rated capacity to continuously perform work under normal conditions. It is usually expressed as the sustainable volume in letter or A4-sized pages that can be printed per month.

Difference between AMPV and Duty Cycle

Duty Cycle takes into account the actual capabilities of a machine with varying circumstances, while Average Monthly Print Volume (AMPV) is the volume an average customer is expected to produce on a machine in a month. AMPV reflects a range of an entire machine population’s monthly usage, while Duty Cycle displays the potential to grow while still utilizing the machine.

This is important to keep in mind because although a customer’s typical print volume may fall into the AMPV range, the company may grow beyond the usual volume and printing capability of the machine. This is why when making a buying decision, a customer should look at their AMPV and the company’s potential to grow.

System Specifications

PrimeLink C9065		PrimeLink C9070		
Simplex Speeds	Color	Black-and-white	Color	Black-and-white
8.5 x 11 in. / A4 60 to 105 gsm uncoated 106 to 176 gsm uncoated 106 to 150 gsm coated 177 to 350 gsm uncoated 151 to 350 coated	Up to 65 ppm Up to 43 ppm Up to 43 ppm Up to 30 ppm Up to 30 ppm	Up to 70 ppm Up to 70 ppm Up to 43 ppm Up to 43 ppm Up to 30 ppm	Up to 70 ppm Up to 50 ppm Up to 50 ppm Up to 35 ppm Up to 35 ppm	Up to 75 ppm Up to 75 ppm Up to 50 ppm Up to 50 ppm Up to 35 ppm
11 x 17 in. / A3 60 to 105 gsm uncoated 106 to 176 gsm uncoated 106 to 150 gsm coated 177 to 350 gsm uncoated 151 to 350 coated	Up to 33 ppm Up to 21 ppm Up to 21 ppm Up to 14 ppm Up to 14 ppm	Up to 35 ppm Up to 35 ppm Up to 21 ppm Up to 21 ppm Up to 14 ppm	Up to 35 ppm Up to 25 ppm Up to 25 ppm Up to 17 ppm Up to 17 ppm	Up to 37 ppm Up to 37 ppm Up to 25 ppm Up to 25 ppm Up to 17 ppm

¹ The Average Monthly Print Volume is the expected regular monthly throughput.

² The Monthly Duty Cycle is the maximum volume capacity expected in any one month. This volume is supported under standard vendor supplied service for any single month but is not expected to be sustained on a regular basis. Customers should consider higher volume machines or multiple machines if average monthly volume approaches the maximum duty cycle on a continual basis.

12 x 18 in. / SRA3 60 to 105 gsm uncoated 106 to 176 gsm uncoated 106 to 150 gsm coated 177 to 350 gsm uncoated 151 to 350 coated	Up to 29 ppm Up to 19 ppm Up to 19 ppm Up to 12 ppm Up to 12 ppm	Up to 30 ppm Up to 30 ppm Up to 19 ppm Up to 19 ppm Up to 12 ppm	Up to 30 ppm Up to 19 ppm Up to 19 ppm Up to 12 ppm Up to 12 ppm	Up to 33 ppm Up to 33 ppm Up to 19 ppm Up to 19 ppm Up to 12 ppm
Auto Duplex Speeds	Color	Black-and-white	Color	Black-and-white
8.5 x 11 in. / A4 Example: 60 to 105 gsm uncoated	Up to 65 ipm 2-sided 32 sheets per minute	Up to 70 ipm 2-sided 35 sheets per minute	Up to 70 ipm 2-sided 35 sheets per minute	Up to 75 ipm 2-sided 37 sheets per minute
11 x 17 in. / A3 Example: 60 to 105 gsm uncoated	Up to 32 ipm 2-sided 16 sheets per minute	Up to 35 ipm 2-sided 17 sheets per minute	Up to 35 ipm 2-sided 17 sheets per minute	Up to 37 ipm 2-sided 18 sheets per minute
Monthly Duty Cycle	Up to 300,000 pages (maximum volume capacity expected in any one month, not expected to be sustained on a regular basis). ¹			
Average Monthly Print Volume (AMPV)	10,000 to 60,000 pages per month ²			
Technology	Xerox® EA-Eco toner with Ultra Low Melt Technology (2400 x 2400 dots per inch)			
Control Panel Languages	International English, International French, Italian, German, International Spanish, Dutch, Brazilian Portuguese, Swedish, Norwegian, Danish, Finnish, Turkish, Greek, Russian, Czech, Polish, Hungarian, Romanian, Catalan			

Assessories

Optional	<p>Xerox® EX-i C9065/C9070 Print Server Powered by Fiery®</p> <p>Xerox® EX-c C9065/C9070 Print Server Powered by Fiery®</p> <p>Xerox® EX C9065/C9070 Print Server Powered by Fiery®</p> <p>Simple Catch Tray</p> <p>Offset Catch Tray</p> <p>High Capacity Feeder (A4)</p> <p>1-Tray Oversized High Capacity Feeder with Storage Bin</p> <p>2-Tray Oversized High Capacity Feeder</p> <p>Interface Decurler Module</p> <p>Xerox Business Ready Finisher (requires a Vertical Transport Kit)</p> <p>Xerox Business Ready Finisher Booklet Maker (requires a Vertical Transport Kit)</p> <p>Xerox® Production Ready Finisher</p> <p>Xerox® Production Ready Booklet Maker Finisher</p> <p>Xerox® Production Ready Plus Finisher</p> <p>XLS Extension Tray Kits (optional)</p> <p>Plockmatic Pro50/35™ Booklet Maker</p> <p>Xerox C/Z Folder</p> <p>Xerox® Basic Punch</p> <p>GBC® AdvancedPunch™ Pro</p> <p>Xerox® Crease/Two-sided Trimmer</p> <p>Xerox® SquareFold® Trimmer Module</p> <p>Xerox Inserter</p> <p>Convenience Stapler</p> <p>Foreign Device Interface Kit</p> <p>Mobility Plate</p> <p>PostScript Kit</p> <p>VOIP Fax (SW) Kit</p> <p>Fax Kits (1 or 3 Line)</p> <p>Server Fax Kit</p> <p>SIPRNET Kit</p> <p>Smart Card Enablement Kit</p> <p>Integrated RFID Card Reader Kit (external)</p>
-----------------	---

	Xerox Workplace Suite, Xerox Workplace Cloud For More information on Xerox® Apps and Solutions, visit xerox.com/AppGallery .		
Electrical Basics			
North America	Voltage: 110-127V Frequency: 50/60 Hz +/- 3%, 20 A		
Europe	Voltage: 220-240V Frequency: 50/60 Hz +/- 3%, 10 A		
Accessories North America: Europe:	Each module requires 120V, 15 A Each module requires 220V, 10 A		
Power Basics			
Running (Average)	PrimeLink C9065: 1,052 watts; PrimeLink C9070: 1,250 watts		
Sleep Mode (Average)	3 watts (Default time to Sleep mode = 1 min.)		
Low Power Mode Recovery Time	Less than 20 seconds		
Operation Environment			
Required Temperature Range	50° to 82° F / 10° to 28° C (Relative Humidity less than 62.5% when temp is 32° C or less)		
Required Relative Humidity	15% to 85% (no condensation)		
Sound Power Levels	Operating: 6.8 B(A); Standby: 3.6 B(A)		
Sound Pressure Levels	Operating: 56 dB(A); Standby: 18 dB(A)		
Weight (approximate base unit only)	604 lb., 273 kg		
Dimensions			
	Width	Depth	Height
Base Unit w/ Offset Catch Tray	62 in. / 1,574 mm	31.6 in. / 803.5 mm	54.8 in. / 1,391.5 mm
Base Unit w/ Business Ready Finisher	79.1 in. / 2,009 mm	31.6 in. / 803.5 mm	54.8 in. / 1,391.5 mm
Base Unit w/ Business Ready Booklet Maker Finisher	81.4 in. / 2,068 mm	31.6 in. / 803.5 mm	54.8 in. / 1,391.5 mm
Base Unit w/ Business Ready Booklet Maker Finisher and C Fold / Z Fold Unit	90.6 in. / 2,301 mm	31.6 in. / 803.5 mm	54.8 in. / 1,391.5 mm
Base Unit w/ Production Ready Finisher	83.48 in. / 2,120.63 mm	31.6 in. / 803.5 mm	54.8 in. / 1,391.5 mm
Base Unit w/ Production Ready Booklet Maker Finisher	94.46 in. / 2,399.43 mm	31.6 in. / 803.5 mm	54.8 in. / 1,391.5 mm
Xerox Crease/two-sided Trimmer	23.81 in. / 760.5 mm	28.12 in. / 714.3 mm	39.03 in. / 991.5 mm
Interface Decurler Module	13.38 in. / 340 mm	28.51 in. / 724.3 mm	39.03 in. / 991.5 mm
Xerox® SquareFold® Trimmer	42 in. / 1,066.3 mm	28.5 in. / 724 mm	22 in. / 558.8 mm
High Capacity Feeder	15.3 in. / 389 mm	24.2 in. / 614 mm	14.8 in. / 377 mm

One Tray Oversized High Capacity Feeder	38.9 in. / 988 mm	30.0 in. / 762 mm	39.1 in. / 992 mm
Two Tray Oversized High Capacity Feeder	38.9 in. / 988 mm	30.0 in. / 762 mm	39.1 in. / 992 mm

Certifications

Graphic Arts Credentials	FOGRA certification* PANTONE® Matching System* PANTONE GOE* PANTONE PLUS* Adobe® PDF Print Engine* Adobe® PostScript® 3™ (certified) IDEAlliance Digital Press Certified to GRACoL® specifications *requires an additional Print Server option
---------------------------------	--

Paper Handling

Single-pass Automatic Document Feeder-Network Scanning

Capacity³	250 sheets of plain paper – 20 lb. / 75 gsm
Speed	Up to 270 ipm color (2-sided, 8.5 x 11 in. / A4)
Paper Sizes	Standard sizes: 5.5 x 8.5 in. to 11 x 17 in. / A6 to A3
Weights	16 to 53 lb. bond / 60 to 200 gsm

Bypass Tray/Tray 5

Capacity³	Up to 250 sheets
Sizes	Custom sizes: 4 x 6 in. to 13 x 26 in. / 100 x 148 mm to 330.2 x 660 mm (A5 to SRA3) XLS sheet size: 13 x 26" (330 x 660 mm)
Weights	18 lb. bond to 129 lb. cover / 60 to 350 gsm (60 to 350 gsm uncoated; 106 to 350 gsm coated) For media 270-350gsm, Image Quality defects near the trail edge may require adjustment using Adjust Image Transfer within Maintenance feature of Tools.
Envelope Capacity	Up to 40 envelopes
Envelope Sizes	#10 Commercial, Monarch (including custom size), C4, C5 (Available as Tray 5. Paper Size Default within tools) run flap open at the trail edge) Custom sizes: 7.5 x 6.7 in. to 9.45 x 6.81 in. / 190 x 170 mm to 240 x 173 mm Digital Laser envelopes recommended
Envelope Weights	75 to 90 gsm

Extra Long Sheets (XLS) Bypass Tray Feeding Limitations

Capacity	XLS in Bypass Tray to 5 or less sheets
Weights	18 lb. bond to 80 lb. cover / 60 to 220gsm uncoated Up to 80 lb. cover / 106 to 220 gsm coated
Alignment / Simplex Only	Not assured for XLS, Simplex/1-sided only

Trays 1 to 4

Capacity³	Tray 1: 500 sheets Tray 2: 500 sheets Tray 3: 870 sheets Tray 4: 1,140 sheets
Sizes	Tray 1: 5.5 x 8.5 in. to 12 x 18 in. / A5 to SRA3 Tray 2: 5.5 x 8.5 in. to 11 x 17 in. / A5 to A3

	Tray 3: 7.25 x 10.5 in., 8.5 x 11 in. / B5, A4 Tray 4: 7.25 x 10.5 in., 8.5 x 11 in. / B5, A4
Weights	Trays 1 and 2: 16 lb. bond to 96 lb. cover / 60 to 256 gsm (60 to 256 gsm uncoated; 106 to 220 gsm coated) Trays 3 and 4: 16 lb. bond to 80 lb. cover / 60 to 220 gsm (60 to 220 gsm uncoated; 106 to 220 gsm coated)
Optional High Capacity Feeder (HCF)	
Capacity³	2,000 sheets
Sizes	7.25 x 10.5 in., 8.5 x 11 in. / 184.2 x 266.7 mm, 279.4 x 215.9 mm (B5, A4)
Weights	16 lb. bond to 60 lb. cover / 60 to 220 gsm (uncoated and coated)
Optional Oversized High Capacity Feeder (OHCF) – 1 or 2 Tray Options	
Capacity³	1 Tray OHCF: 2,000 sheets plus Storage Cabinet 2 Tray OHCF: 4,000 sheets
Sizes	1 Tray OHCF: Tray 6: 3.9 x 5.8 in. / 100 x 148 mm to 13 x 19.2in. / 330x488 mm 2 Tray OHCF: Tray 6 and 7: 3.9 x 5.8 in. / 100 x 148 mm to 13 x 19.2in. / 330x488 mm
Weights	16 lb. bond to 129 lb. cover / 60 to 350 gsm (uncoated and coated) For media 300-350gsm, Image Quality defects near the trail edge may require adjustment using Adjust Image Transfer within Maintenance feature of Tools and must be fed from the MSI.
Total Paper Capacity	
Standard Capacity	3,260 sheets (includes Bypass Tray and Trays 1-4)
Maximum Capacity	7,260 sheets (includes Bypass Tray, Trays 1-4 and Two-tray Oversized High Capacity Feeder)
Two-Sided	94 lb. cover / 256 gsm auto duplex 110 lb. cover / 350 gsm manual duplex for all stocks from bypass trays and optional Oversized High Capacity Feeder
<h2>Finishing Facts</h2>	
Offset Catch Tray	
Capacity³	Up to 500-sheet stacking
Simple Catch Tray XE only	Up to 500-sheet stacking
Capacity	Up to 500-sheet stacking
Optional Business Ready Finisher	
Capacity³	Offsetting Top Tray: 500 sheets Stacking Stapling Tray: 3,000 sheets unstapled or 100 sets (dual or 4-position staple) 11x17 in., 8.5 x 14 in., A3 or 200 sets (single-position staple) 8.5 x 11 in. / A4
Sizes	4 x 6 in. to 12 x 19 in. / A6 to SRA3 for stacking 7.25 x 10.5 in. to 11 x 17 in. / B5 to A3 for stapling 5.5 x 8.5 in. / A5 output to top tray; punch and offset
Weights	16 lb. bond to 110 lb. cover / 60 to 350gsm (coated and uncoated) Top Tray 16 lb. bond to 110 lb. cover / 60 to 256 gsm (coated and uncoated) Stacker Tray
Stapling	Single and multiposition stapling Auto stapling (50 sheets maximum) – 24 lb/90 gsm Letter, Legal, Tabloid, A3, A4, A4 Cover, Executive, 8x10 in, 8.5x13 in, 11x15in, 215x315mm, B4 and B5 sizes supported

Hole Punch North America: Europe:	2-3 Hole Punch 2-4 Hole Punch 4 Hole Swedish Punch (Optional)
Optional Business Ready Booklet Maker Finisher	
Capacity³	Offsetting Top Tray: 500 sheets of A4, 8.5 x 11 Unstapled Stacking Stapling Tray: 1,500 sheets of 8.5 x 11 in. / 11 x 17 in. / A4 / A3 / SRA3 unstapled or 200 stapled sets of 8.5 x 11 in. / A4 (single-position stapling or dual or 4-position stapling) or 100 stapled sets of 11 x 17 in. / A3 / SRA3
Sizes	4 x 6 in. to 12 x 19 in. / A6 to SRA3 for stacking 7.25 x 10.5 in. to 11 x 17 in. / B5 to A3 for stapling 5.5 x 8.5 in. / A5 output to top tray; punch and offset
Weights	16 lb. bond to 110 lb. cover / 60 to 350 gsm (coated and uncoated) Top Tray 16 lb. bond to 110 lb. cover / 60 to 256 gsm (coated and uncoated) Stacker Tray 16 lb. bond to 110 lb. cover / 60 to 256 gsm uncoated, 220 coated Booklet Maker
Stapling	Single and multi-position stapling Auto stapling (50 sheets maximum) – 24 lb/90 gsm Letter, Legal, Tabloid, A3, A4, A4 Cover, Executive, 8x10 in, 8.5x13 in, 11x15in, 215x315mm, B4 and B5 sizes supported
Hole Punch North America: Europe:	2-3 Hole Punch 2-4 Hole Punch 4 Hole Swedish Punch (Optional)
Booklet Maker	Saddle-stitch 2 to 16 sheets (7 sheets at 106 to 176 gsm coated or 5 sheets at 177 to 220 gsm coated), Bi-fold up to 5 sheets Letter, Legal, Tabloid, A3, A4, B4, B5, Executive, 8.5x13 in, 11x15in, 215x315mm, 12 x 18 in, 13x18 in, SRA3 supported

Optional C Fold / Z Fold Unit for Business Ready Finisher	
Types	C Fold, Z Fold and Z Half Fold
Capacity³	40 sheets
Sizes	C Fold and Z Fold: Letter – 8.5 x 11 in. / A4 SEF only Z Half Fold: Tabloid – 11 x 17 in. / A3 only
Weights	16 to 24 lb. bond / 60 to 90 gsm
Output Tray	Envelope Tray: C Fold, Z Fold and Tri-fold Stacker Tray or Top Tray: Z Half Fold
Optional Production Ready Finisher (requires Interface Decurler Module)	
Capacity	Top Tray: 500 sheets of 20 lb. bond / 80 gsm, 8.5 x 11 in. / A4 Stacker Tray: 3,000 sheets of 20 lb. bond / 80 gsm, 8.5 x 11 in. / A4
Sizes	4 x 6 in. to 13 x 26 in. / A6 to SRA3
Weights	18 lb. bond to 110 lb. cover / 60 to 350 gsm (coated and uncoated) Top Tray 18 lb. bond to 110 lb. cover / 60 to 256 gsm (coated and uncoated) Stacker Tray
Multiposition Stapling	Up to 100 sheets of 20 lb. bond / 80 gsm
Hole-punching North America: Europe:	2-3 Hole Punch (Optional) 2-4 Hole Punch (Optional) 4 Hole Swedish Punch (Optional)
Decurling	Included with Interface Decurler Module. Bidirectional with Auto and Manual settings

Optional Production Ready Finisher with Booklet Maker (requires Interface Decurler Module)	
Capacity	Top Tray: 500 sheets of 20 lb. bond / 80 gsm, 8.5 x 11 in. / A4 Lower Tray: 2,000 sheets of 20 lb. bond / 80 gsm, 8.5 x 11 in. / A4
Sizes	4 x 6 in. to 13 x 19 in. / A6 to SRA3
Weights	18 lb. bond to 110 lb. cover / 60 to 350 gsm (coated and uncoated) Top Tray 18 lb. bond to 110 lb. cover / 60 to 256 gsm (coated and uncoated) Stacker Tray 18 lb. bond to 110 lb. cover / 60 to 256 gsm (coated and uncoated) Booklet Maker
Multi-position Stapling	Up to 100 sheets of 20 lb. bond / 80 gsm
Hole-punching North America: Europe:	2-3 Hole Punch (Optional) 2-4 Hole Punch (Optional) 4 Hole Swedish Punch (Optional)
Decurling	Included with Interface Decurler Module. Bidirectional with Auto and Manual settings
Booklet Making Capacity	Saddle-stitch 2 to 30 sheets of 90 gsm (uncoated), up to 15 sheets of 120gsm (coated) Bi-fold up to 5 sheets 8.5 x 11 in., 8.5 x 13 in., 8.5 x 14 in., 9 x 11 in., 11 x 15 in., 11 x 17 in., 12 x 18 in., 13 x 18 in. / A4, B4, A3, SRA3

Optional Production Ready Finisher Plus (requires Interface Decurler Module and PFIM Module)	
Capacity	Top Tray: 500 sheets of 20 lb. bond / 80 gsm, 8.5 x 11 in. / A4 Stacker Tray: 3,000 sheets of 20 lb. bond / 80 gsm, 8.5 x 11 in. / A4
Sizes	4 x 6 in. to 13 x 26 in. / A6 to SRA3
Weights	18 lb. bond to 110 lb. cover / 60 to 350 gsm (coated and uncoated) Top Tray 18 lb. bond to 110 lb. cover / 60 to 256 gsm (coated and uncoated) Stacker Tra
Multiposition Stapling	Up to 100 sheets of 20 lb. bond / 80 gsm
Hole-punching North America: Europe:	2-3 Hole Punch (Optional) 2-4 Hole Punch (Optional) 4 Hole Swedish Punch (Optional)
Decurling	Included with Interface Decurler Module. Bidirectional with Auto and Manual settings
Optional DFA Finishing	Enables DFA Finishing. See Finishing Solutions Planning Guides for specific devices.

Optional GBC® AdvancedPunch PRO	
Punch Configuration Sizes	A3, A4, A5, SRA3, 8.5x11in, 8.5x14in, 11x17in, 12x18in
Weights	20 lb. bond to 129 lb. cover / 75 to 350 gsm (uncoated); 28 lb. bond to 129 lb. cover / 106 to 350 gsm (coated)
Dies	Wide selection of slide-in / slide-out GBC punch die sets available

Optional C Fold / Z Fold Unit for Production Ready Finisher	
Types	C Fold, Z Fold and Z Half Fold
Capacity³	40 sheets
Sizes	C Fold and Z Fold: Letter – 8.5 x 11 in. / A4 SEF only Z Half Fold: Tabloid – 11 x 17 in. / A3 only
Weights	16 to 24 lb. bond / 60 to 90 gsm
Output Tray	Envelope Tray: C Fold, Z Fold and Tri-fold Stacker Tray or Top Tray: Z Half Fold

Optional Inserter	
Sizes	8.5 x 11 in. A4 to 13 x 19.2 in. / SRA3, custom sizes 5.8 x 7.2 in to 13 x 19 in. / 148 x 182 mm
Weights	18 lb bond to 130 lb cover / 60 to 350 gsm
Optional Crease and Two Sided Trim	
Sizes	Crease: 7.25 x 10.5 to 13 x 19 in. / A4 to SRA3, custom sizes 7.2 x 8.3 to 13 x 19 in. / 182 x 210 to 330 x 488 mm Trim: 8 x 10 to 13 x 19 in. / A4 to SRA3, custom sizes 7.2 x 10 to 13 x 19 in. / 182 x 257 x 330 x 488 mm
Weights	Crease: 18 lb bond to 129 lb cover / 60 to 350 gsm Trim: 18 lb bond to 129 lb cover / 60 to 350 gsm
Optional GBC® AdvancedPunch PRO	
Punch Configuration Sizes	A3, A4, A5, SRA3, 8.5x11in, 8.5x14in, 11x17in, 12x18in
Weights	20 lb. bond to 129 lb. cover / 75 to 350 gsm (uncoated); 28 lb. bond to 129 lb. cover / 106 to 350 gsm (coated)
Dies	Wide selection of slide-in / slide-out GBC punch die sets available
Optional Xerox® SquareFold® Trimmer Module	
Capacity	Up to 30 sheets of 90gsm
Sizes	Custom sizes: 8.5 x 11 in. to 13 x 18 in. / A4 to SRA3
Weights	18 lb. bond to 110 lb. cover / 60 to 220 gsm
Convenience Stapler	
Capacity	50 sheets (24 lb. / 90 gsm media)
Extra Long Sheets (XLS) Finishing Limitations	
	XLS will output to SCT, OCT, Business Ready Top Tray, and Production Ready Top Tray, however stacking quality will be limited. XLS Extension Tray Kit is available for the Production Ready Finisher to improve stacking of multiple sheets.
	When printing XLS with the GBC® AdvancedPunch PRO, the Xerox Inserter must be included in the system configuration.
<h2>Printing Basic Facts</h2>	
Print Resolution	Up to 2400 x 2400 dpi
Line Screens	600, 300, 200 and 150 Clustered Dot, 200 Rotated Line Screen (depending on print server / controller selected)
Registration	<ul style="list-style-type: none"> • Advanced registration technology for tighter control • Simple Image Quality Adjustment (SIQA) for de-skew, registration and density uniformity (Available on all configurations as a Maintenance Tool: Alignment Adjustment) • Up to 1.5mm. Variation will occur based on paper size, tray, etc.
First-Print-Out Time	PS- A4 LEF Simplex Color 10.4 seconds / Black-and-white 8.5 seconds
Print Features	<ul style="list-style-type: none"> • A true multifunction product – print, copy, fax and scan, including scan to PC, USB or email, and mobile printing • Benchmark image quality with 2400 x 2400 dpi resolution and EA low melt EA-Eco toner for a smooth, offset-like finish • Makes mobile printing simpler and more convenient

	<ul style="list-style-type: none"> • Expansive media range lets you print everything from postcards to posters, both coated and uncoated stock, up to 350 gsm • Xerox Extensible Interface Platform® (EIP) allows you to connect to third-party software solutions that you can access from the touch-screen of the device or on your own mobile device. • Your choice of servers to best fit your environment: <ul style="list-style-type: none"> • Xerox® Integrated Color Server for the Xerox® PrimeLink C9065/C9070 Printer • Xerox® EX-c PrimeLink C9065/C9070 Print Server Powered by Fiery® • Xerox® EX-i PrimeLink C9065/C9070 Print Server Powered by Fiery – Xerox® EX PrimeLink C9065/C9070 Print Server Powered by Fiery Inline finishing options offer a professional polish with banner printing, stapling, hole-punching, folding and booklet making for presentations, brochures, reports and newsletters. <p>Be secure with integrated security features such as IP filtering, image overwrite, secure print, encrypted Scan to Email, authentication and IPv6 support.</p>
Print Drivers	Xerox Smart Start Driver Installer, Xerox® Global Print Driver® (v3, v4)
Print Solutions	
Mobile Printing (optional)	Xerox Mobile Print®, Xerox® Mobile Print Cloud, Xerox® Print Management and Mobility Suite
Xerox Apps	<ul style="list-style-type: none"> • On Box Apps @PrintbyXerox for mobile printing and Xerox App Gallery to download a multitude of Print Management Apps and Printer Apps.

Copy Basic Facts

First-Copy-Out Time From the Platen: From the DADF:	As fast as 7.8 seconds color / 5.1 seconds black-and-white As fast as 9.6 seconds color / 5.3 seconds black-and-white
Warm Up Time	90 seconds (from cold powered down to Ready Copy)
Digital Imaging	Auto color Auto rotation Image shift Edge erase Auto centering Original type selection (photo and text, photo, text, map) with subtypes lighter/darker Background suppression Auto and manual contrast Sharpness Color balance, color shift and saturation
Reduce / Enlarge	Variable zoom from 25% to 400% in 1% increments Anamorphic zoom Eight user-programmable percentages
Special Features	Auto paper select Auto reduction/enlargement to fit selected paper size Auto tray switching Automatic job recovery Auto color selection Area designation Poster mode Annotation Single/Dual color Booklet creation Multi-up – 2, 4 or 8 up Repeat image Negative image

	<p>Mirror image Covers insertion (front only, front and back, back only, blank or printed) Build job (enables special programming for different pages in one document – can be used for inserts, different paper sources and mixing input from the document glass and the document feeder) Job interrupt Book copying Sample job Mixed-size originals Sheet insert Bates Stamping 2-in-1 X Y zoom Zoom range 25 to 400 % Margin shift Photo Mode Poster Mode Preset Reduce / Enlarge Program ahead (not a selectable feature; but is a default, supported, capability) Covers Erase, Image Repeat, Image Rotate Interrupt Stored Job programs</p>
Scanning Basic Facts	
Concurrency	Scan while printing or while it is transferring scan to network or fax jobs
Scan Features	<p>Mixed size originals Edge erase Reduction/enlargement Fit to size Scan build job Compression Quality / File Size Control Original type (photo and text, photo, text) Auto background and shadow suppression Job flow sheets Thumbnail preview Scan to USB Preview scan job</p>
Input Speed	Up to 270 images per minute Duplex
Resolution	<p>600 x 600 dpi 400 x 400 dpi 300 x 300 dpi 200 x 200 dpi</p>
Maximum Scan Area	Originals up to 11 x 17 in. / A3
Network Print Services	<p>Port 9100 RFC 1179 (LPR) Print to Mailbox and Release</p>
File Formats	<p>PDF Image Only PDF Searchable PDF (Linearized) PDF (A-1) TIFF V6 XPS</p>

Document Management Fields (Metadata)	One to six user-programmable metadata fields per scan job Customized fields viewed on user interface Variable data entered using virtual keyboard
Scan Features	Scan to Home Scan to Desktop WIA Scan to Desktop TWAIN Scan to Mailbox Scan to FTP Scan to sFTP (via EIP solution) Scan via SMB Scan via HTTP Scan via HTTPS Scan to USB Storage Device Scan to Fax Server
Supported Scan Destinations (Standard)	Scan to Email, Scan to Folder, to PC, to Mailbox (private and public), Scan to USB, FTP, SMB, Text searchable PDF, PDF/A, XPS, Thumbnail Preview
Scan to Email Features	Color scanning, Auto Color, Grayscale, Black-and-white Direct document email from device Manual or directory Exchange / Notes / LDAP address searching Signing and encryption Email over SSL Preview scan job
Authentication	SMTP authentication, POP before SMTP, System credentials Single sign on (LDAP, SMB, Kerberos authentication) Scanning Security-TLS
Fax (Optional) – One or Three Line Fax Options	
Compatibility	Color, Auto Color, Black-and-white
Maximum Scan Area	11 x 17 in. SEF
Fax Send Features	iFax Lan Fax IP Fax Fax Forward to Email Fax Forward to FTP destination Fax Forward to SMB destination Fax Forward to Fax destination
<h2>Device Management</h2>	
Xerox® Embedded Web Services: (Integrated Web Pages Provided by the Device)	
Device Status	Web server embedded in Network Controller: <ul style="list-style-type: none"> • Tray status/contents • Consumables status • Status
Job Submission	Print ready files: PS, PCL, TIFF, PDF, JPG, XPS Output feature selection (2-sided, output color, collate, staple, hole punch, output destination) Delivery options (Immediate, sample set, delay and secure, Save job or reprint)
Device Administration	Allows simple, remote installation setting of configuration options and management of the device
Browsers	Internet Explorer 7.x, 8.x, 9.x Safari 5.x Mozilla Firefox 4.x, 5.x, 6.x, 7.x, 8.x, 9.x, 10.x, 11.x Opera 11.x Chrome 12

Support	Install print/scan drivers and online support available via web page
19 Languages Supported	English, French, Italian, German, Spanish, Dutch, Brazilian Portuguese, Swedish, Norwegian, Danish, Finnish, Russian, Polish, etc.
Remote Services	
Xerox® Automated Meter Readings (AMR)	Automates the process of collecting and submitting meter reads for tracking and billing of Xerox® device usage. Eliminates the need for time-consuming end-user involvement and ensures that meter reads are submitted to Xerox on time.
Xerox® Automatic Supplies Replenishment (ASR)	Automatically orders supplies for Xerox® output devices based on actual usage, eliminating the need to manually manage supplies inventory.

Security

Features	<ul style="list-style-type: none"> Access Controls AES 256-bit Encryption Audit Log Certificate Revocation List (CRL)/Status Protocol (OCSP) Detection of External Program Falsification (XCP Plug-in) Domain Filtering FIPS 140-2 Firmware Verification Immediate Disk Overwrite IP Address Filtering IPsec Network Authentication Pre-installed Self-Signed Certificates Role Based Permissions Secure Print Security Certificate Management Smart Card Enablement (CAC/PIV/.NET) SNMPv3 Status Protocol (OCSP) TLS/SSL (TLS 1.0, 1.1, 1.2) SIPRnet
-----------------	--

Print Servers / Digital Front Ends

Xerox® Integrated Color Server	
Processor	1.6 GHz Dual-core
Memory	4 GB system plus 1 GB page memory
System Disk	320 GB Hard Disk Drive
Display	10.4 in. color touchscreen flat-panel
Device Operating System	Linux
PDLS Page Description Languages	<ul style="list-style-type: none"> Adobe® PostScript® 3™ PDF PCL® 5c, 6 XML Paper Specification (XPS®)
Operating Systems	<ul style="list-style-type: none"> Windows® XP Windows Server 2003 (32- and 64-bit) Windows Server 2008 (32- and 64-bit) Windows Server 2012 Windows Vista (32- and 64-bit) Windows 7 (32- and 64-bit) Windows 8 (32- and 64-bit)

	<p>Mac OS® 10.7 and above Solaris® 9, 10 HP-UX® 11 v2 IBM® AIX® 5 Red Hat® Fecora® Core 15-17 Red Hat Enterprise 4 and 5 openSUSE® 11 and 12 Ubuntu® Unix®</p>
<p>Print Drivers Supported</p>	<p>Please refer to www.xerox.com/support for specifics. As new operating system versions are added, support is also added for the Xerox® PrimeLink C9065/C9070 Color Printer. Also note that there is more than one print driver based on the configuration purchased (e.g., digital front ends, Xerox® Global Print Driver)</p> <p>Windows 7, 32-bit Windows 7, 64-bit Windows 8, 32-bit Windows 8, 64-bit Windows 8.1 Update 1, 32-bit Windows 8.1 Update 1, 64-bit Windows 10, 32-bit Windows 10, 64-bit Windows 10S, 32 bit & 64-bit Windows Server 2008, 32-bit (SP2) Windows Server 2008, 64-bit (SP2) Windows Server 2008 R2, 64-bit (SP1) Windows Server 2012, 64-bit Windows Server 2012 R2, 64-bit Windows Server 2016, 64-bit Windows Server 2019, 64-bit Citrix® Xen App 7.15 Citrix® Xen Desktop 7.15 Citrix® Virtual Apps and Desktops 7 Novell Open Enterprise Server 2018 Cluster: Windows Server 2008 32- and 64-bit, 2008 R2, 64-bit; Windows Server 2012 64-bit; Windows 2012 R2 64-bit, Windows Server 2016 & 2019, 64 macOS High Sierra (10.13) macOS Mojave (10.14) macOS Catalina (10.15) Fedora Core 29 x32 Fedora Core 29 x64 Fedora Core 30 x32 Fedora Core 30 x64 Ubuntu 18.04 x32 & x64 Ubuntu 19.04 x64 OpenSuse 15.0 x32 & x64 Solaris 11.4 x86 Solaris SPARC 11.4 Power PC AIX 7.2 Itanium HP-UX 11i v3 Update 18 Xerox® Global Print Driver® v3 & v4</p>
<p>Features</p>	<p>Automatic two-sided Bi-directional print drivers provide device and job status Macintosh Driver (Watermark, Booklet Creation, JBA, Secure, Sample, Delay Print) Secure print Delay print Embedded web server for remote control/monitor/setup Enhanced gloss Sample set</p>

	<p>Booklet creation Cover selection Paper selection by attribute N-up Watermarks Banner sheets Banner printing Fit to new paper size Output tray selection Print calibration (with EFI) Print from USB (No Print Driver required)</p>
Connectivity	Ethernet interface (10 MBTX / sec, 100 MBTX / sec, 1000 MBTX / sec)
Additional Print Server Options	
Xerox® EX-i C9065/C9070 Print Server Powered by Fiery®	
Processor	<ul style="list-style-type: none"> Intel 3-6100 (3.7 GHz) Processor (Performance optimized by proprietary combination of EFI Technology, VX600 ASIC and software)
Memory	4 GB
Hard Drive	500 GB
Server Operating System	Linux®
Print Languages (PDL)	Adobe PostScript® Level 1,2,3, Adobe PDF, EPS, PCL® 6C, TIFF, JPG, and MicroSoft® native formats via Fiery® Hot Folders
Features	<ul style="list-style-type: none"> Productivity starts with a fast RIP. The Integrated Fiery Color Server enables you to print large and/or complex Microsoft® Office® documents, PowerPoint® files and color-critical PDFs accurately and quickly. Fully integrated with Xerox ConnectKey® Apps. Simplify and streamline your workflow. Automate job submission of repetitive job types to achieve productive, error-free workflows with Hot Folders and Virtual Printers. Take advantage of commonly used Fiery presets to save time when submitting jobs. With Fiery server technology, even novice users can perform complex jobs using the pre-set drivers configured for the task. Get the color right. Produce precise, exact color from all applications, platforms and formats with Fiery color management tools. Turn up the impact with variable information. Customize your output to a specific audience with varying text, photos and graphics with the Integrated Fiery Color Server's basic variable data printing capabilities. Print high-quality photos and images Use Fiery VUE, the "visual print driver," to create and print professional booklets quickly, easily and cost effectively in-house Easily print files with mixed paper sizes and types Command WorkStation Fiery JDF Secure Erase Paper Catalog Fiery Compose Fiery Remote Scan
Connectivity	Direct Connection (Single IP) & Optional Network Switch (Dual IP): TCP/IP, AppleTalk, SNMP, IPv4, IPv6, IPP, FTP,SMB, WSD, Bonjour, Port 9100
Additional Options	<ul style="list-style-type: none"> Productivity Package <ul style="list-style-type: none"> Fiery ImageViewer Fiery Image Enhance Visual Editor Control Bar Builder Postflight Report Configurable Auto Trapping Paper Simulation Graphic Arts Filters for Hot Folders Rush Print, Schedule Print and Print/Process Next

	<ul style="list-style-type: none"> ○ Fiery JobFlow Base ● Fiery impose ● Color Profiler Suite (with ES2000) ● Network Hub Kit
	For more information, go to www.xerox.com
Xerox® EX-c C9065/C9070 Print Server Powered by Fiery®	
Processor	AMD® GX-424CC processor 2.4 GHz
Memory	2 GB RAM
Hard Drive	500 GB
Server Operating System	Linux®
Print Languages (PDL)	Adobe PostScript® Level 1,2,3, Adobe PDF, EPS, PCL® 6C, TIFF, JPG, and MicroSoft® native formats via Fiery® Hot Folders
Features	<p>Easy-to-use color adjustment tools that deliver outstanding color quality from all applications and file formats.</p> <ul style="list-style-type: none"> ● Print logo and corporate colors correctly (including PANTONE colors) ● Print high-quality photos and images ● Use Fiery VUE, the “visual print driver,” to create and print professional booklets quickly, easily and cost effectively in-house ● Easily print files with mixed paper sizes and types ● Fully integrated with Xerox ConnectKey® Apps ● Paper Catalog ● Command WorkStation ● Fiery Freeform ● Fiery Remote Scan
Connectivity	Direct Connection (Single IP) & Optional Network Switch (Dual IP): TCP/IP, AppleTalk, SNMP, IPv4, IPv6, IPP, FTP,SMB, WSD, Bonjour, Port 9100
Additional Options	<ul style="list-style-type: none"> ● Options Bundle <ul style="list-style-type: none"> ○ Fiery Spot-On™ with PANTONE approved libraries ○ Fiery Hot Folders ○ Fiery Virtual Printers ○ Auto Trapping ● Color Profiler Suite (with ES2000) ● Network Hub Kit ● Spot On ● Hot Folders/ Virtual Printers
Xerox® EX C9065/C9070 Print Server Powered by Fiery®	
Processor	Intel® Core™ i5-6500 Processor (3.2 up to 3.6 GHz with Turbo), Quad Core
Memory	8 GB
Hard Drive	1 TB
Server Operating System	Windows 10
Print Languages (PDL)	Adobe PostScript® Level 3, Adobe PDF, EPS, PCL® 6C, PCL 5, TIFF, JPG, MicroSoft® native formats via Fiery® Hot Folders and Adobe PDF Print Engine (APPE)
Features	<ul style="list-style-type: none"> ● Job-based Calibration Integration <ul style="list-style-type: none"> – Fiery Spot-On finds the best match of PANTONE®, PANTONE Series, RGB, CMYK, L*a*b* and Spot Colors – Color Modes for professional proofing and enhanced production color requirements – Maximum print density ● Fully integrated with Xerox ConnectKey® Apps. ● Fiery technology increases your profits by delivering high-impact documents with vibrant images and color that exceed your customers’ expectations and also meets tight turnaround times and allows you to do more work by automating manual tasks and removing bottlenecks that slow down production.

	<ul style="list-style-type: none"> • The Fiery Command WorkStation increases your production and reduces errors and waste by centralizing job management via its intuitive user interface. Simplify your labor-intensive document composition and imposition tasks even more by using Fiery SeeSequence Impose and Compose’s intuitive interface. • Print high-quality photos and images • Use Fiery VUE, the “visual print driver,” to create and print professional booklets quickly, easily and cost effectively in-house • Easily print files with mixed paper sizes and types • Paper Catalog • Sequential Printing • Fiery JDF • Insert Tabs
Connectivity	Direct Connection (Single IP) & Optional Network Switch (Dual IP): TCP/IP, AppleTalk, SNMP, IPv4, IPv6, IPP, FTP,SMB, WSD, Bonjour, Port 9100
Additional Options	<ul style="list-style-type: none"> • Fiery Graphic Arts Package, Premium Edition (optional) provides expert tools for preflighting and troubleshooting jobs • Fiery Color Profiler Suite (optional) creates, verifies and edits color profiles with a single profiling solution • Furniture Kit – Monitor, Keyboard, and Mouse • Color Profiler Suite (with ES2000) • Removable HDD • Network Hub Kit
	For more information, go to www.xerox.com

Two-Sided Maximum Paper Weights

Duplex (2-sided) Copying / Printing Maximum Auto Duplex

Paper Size	Coated	Uncoated
12x18/SRA3 (Tray 1)	Up to 220gsm	Up to 256gsm
11x17/A3 (Trays 1&2)	Up to 220gsm	Up to 256gsm
8.5x11 Letter/A4 (All Trays)	Up to 220gsm	Up to 256gsm
13x19.2/SRA3 Tray 5(Bypass) Tray 6,7 OHCF	Up to 220gsm	Up to 256gsm

One-Sided Maximum Paper Weights

Tray 1: Maximum 220 gsm, 256 uncoated

Tray 2: Maximum 220 gsm, 256, uncoated

Tray 3: Maximum 220 gsm

Tray 4: Maximum 220 gsm

Tray 5 / Multi Sheet Inserter / Bypass: 350 gsm

Tray 6 Oversized High Capacity Feeder: 350 gsm

Tray 7 Oversized High Capacity Feeder: 350 gsm

Heavyweight and Banner Tray Kit (Optional MSI Tray)

For advanced and robust media with an ultra small footprint

- Use for 350 gsm, 300 gsm black paper,
- Very small/long sheets, and long runs—reliability etc.
- Great fit for graphic artists and many challenging media types



Heavyweight, Cards, Plastics, Extra Long, Banners



Envelope Considerations

The Xerox C9065/C9070 currently supports running the following envelope types through Tray 5. Depending on thickness, up to 50 envelopes can be loaded. Envelopes can also be fed from OHCF Trays 6 & 7 with the small media side guide installed. Stack heights in these trays may need to be reduced if jams are encountered with various envelope types.

Envelope Type/Size	Feed Direction Flap Open	UI Tools Input
Monarch 3.87in x 7.50in 98.4 X 190.5mm	LEF	Custom Paper Size 7.5in x 6.7in 190.0mm X 170.0 mm
Commercial #10 4.12in x 9.50in 104.8mm X 241.3mm	LEF	Custom Paper Size 9.45in x 6.81in 240.0mm X 173.0 mm
Envelope: Chou-kei3 120.0mm X 235.0mm	SEF	Default Input Size when customized in tools
Envelope: Kaku-ga 240.0mm X 332.0mm	SEF	Default Input Size when customized in tools
Envelope C4 229.0mm X 324.0mm	SEF	Default Input Size when customized in tools
Envelope C5 162.0mm X 229.0mm	SEF	Default Input Size when customized in tools

**Note: Please note that envelopes are not intended to be a primary media for this product.

Envelope Feeding Guidelines

- Envelope should be run using media type “heavyweight 2”, “face-up” selected.
- Envelopes should be run open flap to the left (trail edge) which provides the best wrinkle free results. It is not recommended to run closed flap because it is more susceptible to wrinkles, creases, light image, and the flap sealing during the run.
 - North American envelopes will only run in Custom Size Mode with manually inputting the size indicated above. These dimensions include a commercial style open flap (specific dimensions for the envelopes being used should be entered, including flap size).
 - Some European envelope sizes can be programmed as a default on the UI in Tools.
 - Envelope Basis Weight must be between 75 to 90 GSM.
 - Bypass tray can handle SEF stacks of 30 – 50 envelopes.
 - Stacking capacity in SCT varies from approx. 30 to 100 envelopes.
 - Frequent jams or damage may occur with certain size envelopes & flap designs.
 - Image Quality may be compromised when running various flap & seam designs.
 - Maximum reliable LEF / flap open exit tray stack height is less than 10 envelopes.
 - Maximum reliable SEF stack height in SCT is 30 – 50 envelopes
- Variables that can affect envelope feeding performance:
 - Envelope brand, size, weight, and seam configuration.
 - Flap design, size, and shape.
 - Orientation of Flap in feed trays – Inboard or Outboard.
 - Storage / environmental conditions, and age of envelopes.
 - Output devices used.

Finishing Specifications

Simple Catch Tray (SCT)	
Capacity	Unavailable in North America The Simple Catch Tray (SCT) can accommodate up to 500 sheets of 13"x19"/SRA3 20lb Bond/80 gsm media.
Offsetting Catch Tray OCT	
Capacity	The Offsetting Catch Tray (OCT) can accommodate up to 500 sheets of 13"x19" / SRA3 20lb bond/80gsm Media.
Business Ready Finisher	
Capacity	<ul style="list-style-type: none"> • Top Tray will handle up to 500 sheets of 8.5"x11" / A4 20lb Bond/80 gsm uncoated/coated paper and can accommodate up to 13" x 19" / SRA3 size media 60-300gsm. (Note: heavier paperweight will result in reduced output tray capacity). • Stacker output tray will handle up to 3,000 sheets of 8.5" x 11" / A4 20lb Bond/80 gsm uncoated/coated paper and can accommodate up to 13" x 19" / SRA3 size media 60-300gsm. (Note: larger media will result in reduced output tray capacity). • Support for A5 Paper (5.8in x 8.3in) (148mm x 210mm) output to the top tray; Punch and Offset (Requires the use of the current Global Print Driver)
Weights	16 lb bond to 110 lb cover / 60 to 300 gsm
Multi-position Stapling	<ul style="list-style-type: none"> • Multi-position stapling of up to 50 sheets uncoated paper and 15 sheets coated paper with up to 50 sheets available to the Stacker tray. • Quad stitch stapling available through EFI (stand alone and bustled), and FFPS bustled DFE's only; for 8.5x11/A4, 11x17/A3
Hole Punch North America: Europe:	2-3 Hole Punch 2-4 Hole Punch Swedish Hole Punch
Business Ready Finisher with Booklet Maker	
Capacity	<ul style="list-style-type: none"> • Top Tray will handle up to 500 sheets of 8.5"x11" / A4 20lb Bond/80 gsm uncoated/coated paper and can accommodate up to 13"x19" / SRA3 size media 60-300gsm. (Note: heavier paperweight will result in reduced output tray capacity). • Stacker output tray will handle up to 1,500 sheets of 8.5"x11" / A4 20lb Bond/80 gsm uncoated/coated paper and can accommodate up to 13"x19" / SRA3 size media 60-300gsm. (Note: larger media and heavier media will result in reduced output tray capacity). • Support for A5 Paper (5.8in x 8.3in) (148mm x 210mm) output to the top tray; Punch and Offset (Requires the use of the current Global Print Driver)
Weights	16 lb. bond to 110 lb. cover / 60 to 300 gsm
Multi-position Stapling	<ul style="list-style-type: none"> • Multi-position stapling of up to 50 sheets uncoated paper and 15 sheets coated paper with up to 50 sheets available to the Stacker tray. • Quad stitch stapling available through EFI (stand alone and bustled), and FFPS bustled DFE's only; for 8.5x11/A4, 11x17/A3
Hole Punch North America: Europe:	2-3 Hole Punch 2-4 Hole Punch Swedish Hole Punch
Booklet Making capacity	The Booklet Tray will handle up to 20 sets of a maximum of 16 stapled sheets per set and can accommodate up to 13"x18" / SRA3 media. (Note: larger media will result in reduced output tray capacity). Booklet saddle stitching available with Short Edge Feed (SEF) paper sizes 8.5x11", 8.5x13", 8.5x14", 11x17", , A4, A3,. The Finisher Booklet Maker Tray can accommodate

	<p>up to 20 sets of up to 16 sheets per set when stapled. Booklets can consist of 2 to 16 sheets of 20b (80 gsm)</p> <ul style="list-style-type: none"> • For coated/uncoated stocks the Business Ready Finisher with booklet maker supports booklet sizes of up to 7 sheets of 106-176 gsm, and 5 uncoated sheets of 177-220gsm. • Bi-Fold 5 sheets
Booklet Making Sizes	<ul style="list-style-type: none"> • Booklet stitching available with paper sizes of 8.5"x 11"SEF, 8.5"x13"SEF, 8.5"x14"SEF, 9"x11"SEF, 11"x15"SEF, 11"x17"SEF, 12"x18"SEF, 13"x18"SEF, A4SEF, B4SEF, A3SEF, SRA3SEF. Booklets up to 16 sheets of non-coated 24lb/90 gsm or 14 sheets of non-coated 20lb/80 gsm plus 1 non-coated cover between 90-176 gsm
Saddle-Stitch Stapling	<p>2-16 sheets / 8-64 page booklet 16 lb. bond to 24 lb. bond / 60 to 90gsm</p>
C/Z Folder (Optional for BR Finisher and BR Finisher with Booklet Maker)	
<p>Folder option provide three different folds: C Fold, Z Fold and Z Half Fold</p> <ul style="list-style-type: none"> • Folding limited to 16-24 #/60-90gsm media only • C Fold and Z Fold: <ul style="list-style-type: none"> • Letter/ A4 paper sizes only • System must be interrupted to remove paper from the optional C/Z folding tray. • Output destination to output tray only • C/Z Fold tray capacity- 30 sheets • Z Half fold: <ul style="list-style-type: none"> • Tabloid & A3 paper sizes only • Output destination to stacker tray or top tray • 11" x17" paper can be half-Z-folded and delivered to the Top or Stack trays 	

The GBC® Advanced Punch Pro™ is an inline die punch that utilizes modular die sets to enable a variety of hole-punch patterns in a range of paper sizes, from A4 or 8.5x11 inch (LTR), long-edge-feed to 12x18 or SRA3 media. Output from the GBC® Advanced Punch Pro™ is bound offline.

	<p>The GBC® AdvancedPunch Pro™ requires an Interface Module (IFM) as well as a Production Ready Finisher, or Booklet Maker Finisher.</p> <p>The GBC® AdvancedPunch Pro™ requires an additional electrical receptacle.</p> <p>The GBC® AdvancedPunch Pro™ is not available for use on Business Ready Finishers, or with the Offset Catch Tray.</p> <p>GBC® AdvancedPunch Pro™ does not work in conjunction with Z-fold, bi-fold, letter fold, multi-function finisher punch, staple, or booklet making.</p> <p>Due to its location in the system</p> <ol style="list-style-type: none"> 1 Stock from the Post Process Inserter Tray cannot be run through the GBC® AdvancedPunch Pro™. 2 Stacking to the booklet output tray or letter fold output tray is not permitted. <p>The GBC® AdvancedPunch Pro™ supports media from 75 to 300 g/m² uncoated, 120 to 300 g/m² coated.</p> <p>The GBC® AdvancedPunch Pro™ media size support varies depending which Controller is used as follows.</p> <ul style="list-style-type: none"> • Ex, Ex-c Ex-i, by Fiery Print Server: 8.5x11, 11x17, 12x18, 8.5x14, 9x11, A4, A3, SRA3, A5, A4 Cover • Integrated Controller: 8.5x11, A4 • Copy Function: 8.5x11, 11x17, 12x18, 8.5x14, A4, A3, SRA3, A5 <p>The GBC® AdvancedPunch Pro™ supports tab stock for 8.5x11 and A4 no wider than 9". Oversized tabs may be damaged..</p> <ul style="list-style-type: none"> - Stacking may be misaligned on jobs containing tab stock; these jobs will require additional jogging before final finishing. <p>The GBC® AdvancedPunch Pro™ is able to bypass all coated and uncoated media sizes printed on the Xerox C9065/C9070Digital Color Press.</p>
--	---

	<p>Hole Punch position from edge of paper is user adjustable using the Advanced Punch Pro LCD User Interface.</p> <p>Opening the door of the GBC® AdvancedPunch Pro™ while the machine is running will cause the machine to jam and shut down.</p> <p>Gloss coated media may not run as reliably as uncoated paper. Typically, coated papers exhibit increased variability in paper handling due to lower coefficients of friction. This may result in varied punch registration and increased jam rates.</p> <p>Punching 8 ½ x 11 duplexed coated stock using the GBC 3-hole punch is not recommended due to greatly increased paper jams.</p> <p>Due to the nature of punching holes, each punched sheet is slightly deformed, and when stacked, the edge with the holes will have an increased height as compared to the non-punched edge.</p> <ul style="list-style-type: none"> - Reduced stack quality may be experienced due to variability in the punch hole formation. - The stack height can be effected by many factors, such as: paper type, quality, weight and curl, as well as die type, age and condition. Paper curl is best when it has a slight downward curl on the edges. This can be adjusted by the operator while running prints. <p>Additional punch dies are available for order</p> <p>Punch Dies</p> <p>The GBC® AdvancedPunch Pro™ is capable of punching a variety of hole-punch patterns by simply changing the punch die. Punch dies can be changed in seconds without tools. The punch dies currently available are listed below. Each die set has a 90 day warranty from date of purchase.</p> <p>In the Western Hemisphere punch dies are ordered using the Supplies ordering process; in Europe (A4) punches are ordered through sales representatives; please check for availability.</p> <p>Please note: Punch die life will be increased if lightly oiled every 100,000 punch cycles (approximately every two months) with quality machine oil such as 3-in-1 Oil. Small deposits of oil will be observed around the perimeter of the punched holes until the excess oil is absorbed (usually within 20 sheets).</p> <p>The GBC Advanced Punch Pro should be installed in a configuration on C9065/C9070 with an EFI Controller in order to utilize full functionality. The C9065/C9070 internal controller will only support the features of the original GBC, (it will not support the GBC Advance punch Pro). If the C9065/C9070 with internal controller is configured with the GBC Advanced Punch Pro, it will work with Xerox Print Drivers, but only the features of the original GBC would be available and supported. In order to fully enable the new GBC Advanced Punch Pro features the C9065/C9070 must be configured with an optional EFI/ controller.</p>
--	--

SquareFold® Trimmer Module (Optional)	
Operation	<p>Overview</p> <ul style="list-style-type: none"> • The SquareFold® Trimmer Module is an optional piece of equipment that flattens the spine of the booklet to make it lay flat and trims the face of the booklet. It requires the Light Production C Finisher with Booklet Maker (with or without the C-Z Folder) that has upgraded software and hardware. The SquareFold® Trimmer Module is a fully-integrated device, controlled through the print engine UI. • The SquareFold® Trimmer Module is supported by all color servers. • The SquareFold® Trimmer Module can be added to an existing Light Production C Finisher through an available upgrade kit. <p>Configuration</p> <ul style="list-style-type: none"> • The SquareFold® Trimmer Module performs as follows: • Receives the booklet from the booklet unit • Transports the received booklet to the square fold unit to flatten the spine of the booklet and then to the trimmer unit to trim the face of the booklet

	<ul style="list-style-type: none"> • Deposits the finished booklet to the booklet tray. • The SquareFold® Trimmer Module is also able to face-trim without square-folding • All output from the Production Ready Booklet Maker Finisher can be passed through, square-folded, trimmed, or both squared-folded and trimmed • This includes custom sizes from 210x297.4mm – 330.2x457.2mm (8.5x11 SEF Letter through 13x18) • Auto Recognition of SquareFold® Trimmer Module • Square-folding feature: flattens the spine (stapled side) of the booklet. • Trimming feature: trims the face of the saddle-stapled or bi-folded (single-folded) sheets of paper.
Convenience Stapler (Optional - Includes Work Surface)	
Capacity	50-sheet stapling 5,000 staples Requires a separate outlet

Xerox Sustainability

Xerox® operates a worldwide equipment take back and reuse/recycle program. Contact your Xerox® sales representative (1-800-ASK-XEROX) to determine whether this Xerox® product is part of the program. For more information about Xerox® environmental programs, visit www.xerox.com/environment.

Packaging take-back service for Xerox branded products:

Whenever possible, we encourage you to recycle packaging locally as it reduces greenhouse gas emissions associated with transportation. However, if unable to recycle locally, we offer a packaging take-back and recycling service to our customers for Xerox branded products, where customers pay for the return shipping and Xerox pays for the recycling. If interested in this service, please send your packaging to: Xerox Corporation, ESSO – Scrap, 6500 State Route 63, Middletown, OH 45044 , ATTN: EPEAT Packaging Returns

Support Services and Contacts

The Xerox Customer Support Centers are available to provide general information, answer questions and take service calls. You can reach the Customer Support Center at the following toll-free phone numbers:

Technical Support Contact Information		
Geography	Country	Phone Number
North America	US	1-800-821-2797
	Canada	1 800 939 3769
	Mexico	01.800.00.Xerox (93769) Opción 2
South America	Argentina	0800-222-XEROX (0800-222-93769)
	Bolivia, Plurinational	0800-222-XEROX (0800-222-93769)
	Brazil	4004-4050 (capitais e regiões metropolitanas) 0800 979 3769 (demais localidades)
	Chile	800-200-600
	Colombia	+01 8000 410071 / (571) 489 0071
	Paraguay	0800-222-XEROX (0800-222-93769)
	Uruguay	0800-222-XEROX (0800-222-93769)
	Venezuela	+0800 7746837
Western Europe	Austria	0043 1 207 9000
	Belgium	32 2 713 14 52
		352 48 01 23 (Luxembourg)
	Denmark	70107288
Faroe Islands	00 298 344001	

Finland	(09) 6937 9666
France	0 825 012 013
Germany	069 999915632
Greece	801 11 93769
Greenland	+299 36 35 34
Iceland	+354 440 9000
Ireland	1890 925 050
Italy	199 309 241
Luxembourg	32 2 713 14 52 or 35 2 48 01 23 (Luxembourg)
Monaco	0825 03 30 10
Netherlands	020 6563620
Norway	815 00 308
Portugal	707 200 578
Spain	902 200 169 opción 2
Sweden	0771-17 88 08
Switzerland	043 299 90 00
United Kingdom	0870 900 5501

Installation Responsibility Matrix

This section clearly states roles and responsibilities of Xerox and the customer, and any necessary actions.

Responsibility Matrix

Action	Customer	Xerox
Ensure adequate space and power to configure the C9065/C9070 PRO	X	
Unpack system / components		X
Install system hardware		X
Connect all System Components prior to powering up the system		X
Ensure network configuration	X	
Confirm network integrity	X	
Acquire and install client software including print drivers	X	
Configure Workflow Scanning	X	
Run initial software diagnostics when directed	X	
Monitor and adjust as required	X	
Load any additional fonts	X	
Procure BNC transceiver for network connection (if needed)	X	
Order and replace SMart Kits (Drum cartridges, Second Bias Transfer Roll, transfer belt cleaner, and Waste Toner Cartridge, etc.) as needed.	X	
Provide Help Line support		X
Provide spared parts		X
Provide service		X
SIQA (Simple Image Quality Adjustment Tool)	X	

Connectivity for Remote Services

For Client Review of Expectations for Remote Services

1	To the extent necessary to fulfill Services, Customer grants Xerox, without charge, Remote Data Access. Remote Data Access shall be enabled by Customer prior to the commencement of Services via a method prescribed by Xerox and Customer shall cooperate and assist Xerox in providing Remote Data Access. Unless Xerox deems Devices incapable of Remote Data Access, Customer is responsible to ensure that Remote Data Access is maintained at all times Services are being performed, and Xerox will not be
---	--

	responsible for failures to meet service levels where Remote Data Access is not fully maintained by Customer.
2	Upon Xerox's request, Customer shall also provide key contact information, such as IT contact name and phone number for support of their Devices on the their network.
3	Most Xerox equipment is supported and serviced using data that is automatically collected and transferred to Xerox via electronic transmission from equipment through the Customer's network ("Remote Data"). This Remote Data is considered confidential information under the service agreement terms.
4	Remote Data transmitted from Customer may include device information such as registration, meter read, supply level, configuration and settings, software version, and problem/fault code data and may be used by Xerox for billing, report generation, supplies replenishment, support services, on-going and future site optimization opportunities and product improvement purposes.
5	Remote Data Access may also enable Xerox to make available to the customer maintenance releases or upgrades for software or firmware and to remotely diagnose and modify devices to repair and correct faults.
6	Remote Data will be transmitted to a secure off-site location in a secure manner specified by Xerox in accordance with Xerox published policies on information security [at http://www.xerox.com/information-security/enus.html] for your region.
Install Support	
7	<p>For Install Support that includes Xerox System Analysts: Customer shall contact and/or be contacted by their Xerox Systems Analyst.</p> <p>For Install Support that does not include Xerox System Analysts: Customer shall first utilize their Product System Administrator Guides available at Xerox.com for Xerox Color C9065/C9070, under the Support and Drivers link and by selecting documentation for their desired product. If unsuccessful, the Customer should go to Xerox.com and select "Technical Product Support" within the "Contacts" link to determine the appropriate contact for further support.</p>
Connectivity Information	
8	See Table Below

Setup Remote Services on Xerox device:			
	Who?		
	Customer	Professional Services/Partner	Customer Service Engineer
<p>Use the following to begin the establishment of Remote Services for your new Xerox device. This is not to replace the product System Administrator Guide or Installation Guide but to identify certain install tasks that can be completed before and after the delivery of your device.</p> <p>In order to take advantage of Xerox offerings, Device Direct and/or Xerox Device Agent (like XDA lite) software must be installed and devices connected and communicating to Xerox. These offerings may include Automatic Meter Reads, Automatic Supplies Replenishment and Remote Diagnostics Support for your device(s).</p> <p>The following needs to be completed <u>where applicable</u>:</p>			
PRE-DELIVERY: Device Networking Tasks:			
<ul style="list-style-type: none"> Non-Production Devices: After signing agreement with Xerox, an email will be sent to you with a web link to download the appropriate software to install on a PC/server that is operational 24/7. 	X		
<ul style="list-style-type: none"> Print Driver Software: Go to the "Support and Drivers" under C9065/C9070 link on Xerox.com. If applicable, print drivers will be available to download and install on your client devices. 	X		
<ul style="list-style-type: none"> Installation by Professional Services: To ensure Device Remote Connectivity can be established, network data will need to be collected by a Xerox Systems Analyst. A configuration form will be provided and require completion for each device documenting connectivity and network information. Each individual device will require a configuration form, unless all devices are to be configured in the same manner. In those cases, one configuration form along with a list of applicable serial numbers on a separate sheet is acceptable. 		X	
<ul style="list-style-type: none"> IT Policy Compliance: You (customer) are responsible for obtaining approval for any internal IT policy compliance required for the Xerox device/software to communicate via your intranet / internet to Xerox. 	X		

POST-DELIVERY/INSTALL: Device Networking Tasks:			
<ul style="list-style-type: none"> Ethernet Cable: You (customer) need to provide an Ethernet cable for the device to the network drop. Cable Connection can be completed by customer or installer depending on requirements. 	X	X	X
<ul style="list-style-type: none"> Sustaining Connectivity: Remote Connectivity must be maintained to take advantage of Xerox offerings. Offerings include Remote diagnostics, supplies replenishment, and meter reads from appropriate products. 	X		
<p>7. Device Direct (DD) Communications: Each device will need to be communicating to Xerox through the internet via the Xerox Device Direct method for Remote Diagnostics support. Follow the steps below (customer) to find how to setup Device Direct, if required.</p> <p>Setting up Device Direct:</p> <p>A) Go to the "Support and Drivers" link on Xerox.com for Xerox Color C9065/C9070 Search for your product, then click on the Support link for that product. In the search field, enter "Enroll SMart eSolutions" and follow the instructions provided.</p> <p>B) If the search does not return any instructions: Click on the Documentation link for Xerox Color C9065/C9070 Open the System Administrators Guide and refer to the section of the guide which provides information regarding Smart eSolutions Setup and follow the steps provided.</p>	X	X	X



Installation Planning

Operating Environment

Operating Environment	C9065/C9070
Required Temperature Range	50° to 82° F (10° to 28° C)
Required Relative Humidity	15% to 85% RH
Altitude (above sea level)	Max of 8,200 (2,500 meters)
Sound Power Levels (Base Configuration)	Operating: 6.8 LwAd(B) Standby: 3.6 LwAd(B)
Sound Pressure Levels (Base Configuration)	Operating: 56 LpAd(dBA) Standby: 18 LpAd(dBA)

Electrical Requirements

Electrical	C9065/C9070
North America	Voltage : 110-127 VAC +/- 10% Frequency: 50/60 Hz +/- 3%, 20 A
Europe / Asia / South America / Africa	Voltage : 220-240 VAC +/- 10% Frequency: 50/60 Hz +/- 3%, 10 A
NA Specific Power Requirements: CC9065/C9070	
Line Option	Sole Use (not required but recommended)
Voltage	110-127
Amperage	20
Cycles	60 Hz, Single Phase
Xerox Receptacle Part Number	600S3703
Receptacle NEMA Part Number	5-20R

Power Cord Length	8.5ft.	
<p>Receptacle Diagram</p> <p>The Xerox C9065/C9070 Pro requires the use of a 20-ampere outlet, which is standard in most modern office buildings. Consult the diagram (right side) to confirm the existence of this outlet in the proposed installation space.</p>		

EU Specific Power Requirements: CC9065/C9070	
Line Option	Sole Use (not required but recommended)
Voltage	220-240
Amperage	10
Cycles	50 Hz, Single Phase
Receptacle	The Xerox C9065/C9070 Pro requires the use of a 10-ampere outlet, which is standard in most modern office buildings. Consult with local service to determine the country specific receptacle and confirm the existence of this outlet in the proposed installation space.
Power Cord Length	8.5ft.

Accessories Requiring External Power Source	
Conv. Stapler	(120V 15 A) / (220V 10 A)
Print Server	(120V 15 A) / (220V 10 A)
Monitor	(120V 15 A) / (220V 10 A)
OHCF (1- or 2- tray)	(120V 15 A) / (220V 10 A)
IDM	(120V 15 A) / (220V 10 A)
GBC Advanced Punch Pro	(120V 15 A) / (220V 10 A)
Square-Fold Trimmer	(120V 15 A) / (220V 10 A)
PR Finisher/ PR Booklet maker	(120V 15 A) / (220V 10 A)
C/Z Folder	(120V 15 A) / (220V 10 A)
Spectrophotometer powered through USB port	

Power Consumption 220v-240v	C9065	C9070
Running (Average)		
Base unit	1110 watts	1140 watts
Base unit with Business Ready Finisher	1230 watts	1330 watts
Base unit with Business Ready Booklet Maker Finisher	1230 watts	1330 watts
Standby Mode	218 watts	201 watts
Low Power Mode	100 watts	108 watts
Sleep Mode Average	3 watts (Default time to Sleep mode = 2 min.)	
Warm up from Power off	230seconds	
Recovery from Low Power	< 20 sec.	
Recovery from Sleep	< 28 sec.	

Physical Space Requirements

Configuration	Width	Depth	Height	Weight
IOT (Base) (IOT +UI + UI Mtg.)	46" 1168.6mm	31.6 " 803.5mm	54.8" 1391.5mm	563 lbs
IOT + OCT	62 " 1574 mm	31.6 " 803.5mm	54.8" 1391.5mm	576 lbs
HCF + IOT + OCT	62 " 1574 mm	31.6 " 803.5mm	54.8" 1391.5mm	640 lbs
IOT+ BR Finisher	78.8" 2002 mm	31.6 " 803.5mm	54.8" 1391.5mm	679 lbs (563 + 113)
HCF + IOT +BR Finisher	78.8" 2002 mm	31.6 " 803.5mm	54.8" 1391.5mm	740 lbs (64 + 563 + 113)
IOT + CZ Folder + BR Finisher	88" 2234 mm	31.6 " 803.5mm	54.8" 1391.5mm	779 lbs (563 + 103 + 113)
HCF + IOT + CZ Folder + BR Finisher	88" 2234 mm	31.6 " 803.5mm	54.8" 1391.5mm	843 lbs (64 + 563 + 103 + 113)
OHCF + IOT +BR Finisher	105.2" 2673 mm	31.6 " 803.5mm	54.8" 1391.5mm	1010 lbs (352 + 545 + 113)
OHCF + IOT + CZ Folder + BR Finisher	114.4" 2905 mm	31.6 " 803.5mm	54.8" 1391.5mm	1113 lbs (352 + 545 + 103 + 113)
IOT + BR Booklet Maker Finisher	81.4" 2068 mm	31.6 " 803.5mm	54.8" 1391.5mm	727 lbs (563 + 164)
HCF + IOT + BR Booklet Maker Finisher	81.4" 2068 mm	31.6 " 803.5mm	54.8" 1391.5mm	791 lbs (64 + 563 + 164)
IOT + CZ Folder + BR Booklet Maker finisher	90.6" 2300 mm	31.6 " 803.5mm	54.8" 1391.5mm	830 lbs 563 + 103 + 164)
HCF + IOT + CZ Folder + BR Booklet Maker finisher	90.6" 2300 mm	31.6 " 803.5mm	54.8" 1391.5mm	894 lbs (64 + 563 + 103 + 164)
OHCF + IOT + BR Booklet Maker Finisher	98.4" 2500.5 mm	31.6 " 803.5mm	54.8" 1391.5mm	1061 lbs (352 + 545 + 164)
OHCF + IOT + CZ Folder + BR Booklet Maker finisher	107.6" 2732.5 mm	31.6 " 803.5mm	54.8" 1391.5mm	1164 lbs (352 + 545 + 103 + 164)
IOT + IFM + PR Finisher	93.1' 2363.6 mm	31.6 " 803.5mm	54.8" 1391.5mm	860 lbs (563+110+187)
IOT+IFM+Inserter+PR Finisher	99.8' 2370.3 mm	31.6 " 803.5mm	54.8" 1391.5mm	959 lbs (563+110 +99 +187)
IOT + IFM + Two Sided Trimmer + PR Finisher	116.9' 2968.6 mm	31.6 " 803.5mm	54.8" 1391.5mm	1120 lbs (563+110+260 +187)
IOT + IFM + Inserter + Two Sided Trimmer + PR Finisher	123.6" 3133.6 mm	31.6 " 803.5mm	54.8" 1391.5mm	1219 lbs (563+110+ 99+260+187)
HCF + IOT + IFM + PR Finisher	93.1' 2363.6 mm	31.6 " 803.5mm	54.8" 1391.5mm	924 lbs (64+563+110+187)

HCF + IOT+IFM+Inserter+PR Finisher	99.8"	31.6"	54.8"	1023 lbs
	2528.6 mm	803.5mm	1391.5mm	(64+563+110 +99+187)
HCF + IOT + IFM + Two Sided Trimmer + PR Finisher	116.9"	31.6"	54.8"	1184 lbs
	2968.6 mm	803.5mm	1391.5mm	(64+563+110+260+187)
HCF + IOT + IFM + Inserter + Two Sided Trimmer + PR Fin	123.6"	31.6"	54.8"	1283 lbs
			1391.5mm	
IOT + IFM + PR Booklet Maker Fin	3133.6 mm	803.5mm		(64+563+110+99+260+187)
	94.5"	31.6"	54.8"	904 lbs
IOT + IFM + Inserter + PR Booklet Maker Fin	2400.3 mm	803.5mm		(563+110+231)
	101.2"	31.6"	54.8"	1003 lbs
IOT + IFM + Two Sided Trimmer + PR Booklet Maker Fin	25635. mm	803.5mm		(563+110+99+231)
	118.3"	31.6"	54.8"	1164 lbs
IOT + IFM + Inserter + Two Sided Trimmer + PR Booklet Maker Fin	3005.3 mm	803.5mm		(563+110+260+231)
	125"	31.6"	54.8"	1263 lbs
HCF + IOT + IFM + PR Booklet Maker Fin	3170.3 mm	803.5mm		(563+110+99+260+231)
	94.5"	31.6"	54.8"	968 lbs
HCF + IOT + IFM + Inserter+ PR Booklet Maker Fin	2400.3 mm	803.5mm		(64+563+110+231)
	101.2"	31.6"	54.8"	1067 lbs
HCF + IOT + IFM + Two Sided TrimmerPR Booklet Maker Fin	25635. mm	803.5mm		(64+563+110+99+231)
	118.3"	31.6"	54.8"	1228 lbs
HCF + IOT + IFM + Inserter + Two Sided TrimmerPR Booklet Maker Fin	3005.3 mm	803.5mm		(64+563+110+260+231)
	125"	31.6"	54.8"	1327 lbs
HCF + IOT+ IFM + CZ Folder + PR Finisher	3170.3 mm	803.5mm		(64+563+110+99+260+231)
	102.2"	31.6 "	54.8"	1038 lbs
HCF + IOT+ IFM + Inserter + CZ Folder + PR Finisher	2595.9 mm	803.5mm		(64+563+110+114+187)
	108.9"	31.6 "	54.8"	1137 lbs
HCF + IOT+ IFM + Two Sided Trimmer + CZ Folder + PR Finisher	2760.5 mm	803.5mm		(64+563+110+99+114+187)
	126"	31.6 "	54.8"	1298 lbs
HCF + IOT+ IFM + Inserter + Two Sided Trimmer + CZ Folder + PR Finisher	3200.9 mm	803.5mm		(64+563+110+260+114+187)
	132.7"	31.6 "	54.8"	1397 lbs
OHCF + IOT + IFM + PR Booklet Maker Fin	3365.9 mm	803.5mm		(64+563+110+99+260+114+187)
	119.5"	31.6"	54.8"	1238 lbs
OHCF + IOT + IFM + Inserter + PR Booklet Maker Fin	3035.3 mm	803.5 mm		(352+545+110+231)
	126.2"	31.6"	54.8"	1337 lbs
OHCF + IOT + IFM + Two Sided Trimmer + PR Booklet Maker Fin	3200.3 mm	803.5 mm		(352+545+110+99+231)
	143.3"	31.6"	54.8"	1498 lbs
OHCF + IOT + IFM + Inserter + Two Sided Trimmer + PR Booklet Maker Fin	3640.3 mm	803.5 mm		(352+545+110+260+231)
	150"	31.6"	54.8"	1597 lbs
OHCF + IOT + IFM + CZ Folder + PR Booklet Maker Fin	3805.3 mm	803.5 mm		(352+545+110+99+260+231)
	128.6"	31.6 "	54.8"	1352 lbs
OHCF + IOT + IFM + Inserter + CZ Folder + PR Booklet Maker Fin	3266.3 mm	803.5 mm		(352+545+110+ 114+ 231)
	135.3"	31.6 "	54.8"	1451 lbs
OHCF + IOT + IFM + Two Sided Trimmer + CZ Folder + PR Booklet Maker Fin	3431.3 mm	803.5 mm		(352+545+110+ 99 +114+ 231)
	152.4"	31.6 "	54.8"	1612 lbs
OHCF + IOT + IFM + Inserter + Two Sided Trimmer + CZ Folder + PR Booklet Maker Fin	3871.3 mm	803.5 mm		(352+545+110+260+114+ 231)
	159.1"	31.6 "	54.8"	1711 lbs
HCF + IOT + IFM + GBC + PR Finisher	4036.3 mm	803.5 mm		(352+545+110+99+260+114+ 231)
	110.6"	31.6"	54.8"	1144 lbs
	2808.6 mm	803.5mm	1391.5mm	(64+563+110+220+ 187)

HCF + IOT + IFM + Inserter +GBC + PR Finisher	117.3"	31.6"	54.8"	1243 lbs
	2973.6 mm	803.5mm	1391.5mm	(64+563+110+99+220+ 187)
HCF + IOT + IFM + GBC + Two Sided Trimmer + PR Finisher	134.4"	31.6"	54.8"	1404 lbs
	3413.6 mm	803.5mm	1391.5mm	(64+563+110+220+260+187)
HCF + IOT + IFM + Inserter + GBC + Two Sided Trimmer +PR Finisher	141.1"	31.6"	54.8"	1503 lbs
	3578.6 mm	803.5mm	1391.5mm	(64+563+110+99+220+260+187)
OHCF + IOT + IFM + GBC + PR Finisher	127.8"	31.6"	54.8"	1414 lbs
	3247.3 mm	803.5mm	1391.5mm	(352+545+110+220+ 187)
OHCF + IOT + IFM + inserter + GBC + PR Finisher	134.5"	31.6"	54.8"	1513 lbs
	3412.3 mm	803.5mm	1391.5mm	(352+545+110+99+220+ 187)
OHCF + IOT + IFM + GBC + Two Sided Trimmer + PR Finisher	151.6"	31.6"	54.8"	1674 lbs
	3852.3 mm	803.5mm	1391.5mm	(352+545+110+220+260+ 187)
OHCF + IOT + IFM + Inserter + GBC + Two Sided Trimmer + PR Finisher	158.3"	31.6"	54.8"	1772 lbs
	4017.3 mm	803.5mm	1391.5mm	(352+545+110+220+260+ 187)
2T OHCF + IOT + IFM + GBC + PR Finisher	127.8"	31.6"	54.8"	1481 lbs
	3247.3 mm	803.5mm	1391.5mm	(419+545+110+220+ 187)
HCF + IOT + IFM +GBC + CZ Folder + PR Finisher	137"	31.6 "	54.8"	1258 lbs
	3479.3 mm	803.5mm	1391.5mm	(64+563+110+220+114+187)
HCF + IOT + IFM + Inserter + GBC + CZ Folder + PR Finisher	143.7"	31.6 "	54.8"	1357 lbs
	3644.3 mm	803.5mm	1391.5mm	(64+563+110+99+220+114+187)
HCF + IOT + IFM + GBC + Two Sided Trimmer + CZ Folder + PR Finisher	160.8"	31.6 "	54.8"	1518 lbs
	4084.3 mm	803.5mm	1391.5mm	(64+563+110+220+260+114+187)
HCF + IOT + IFM + Inserter + GBC + Two Sided Trimmer + CZ Folder + PR Finisher	167.5"	31.6 "	54.8"	1617 lbs
	4249.3 mm	803.5mm	1391.5mm	(64+563+110+99+220+260+114+187)
OHCF + IOT + IFM +GBC + CZ Folder + PR Finisher	137"	31.6 "	54.8"	1528 lbs
	3479.3 mm	803.5mm	1391.5mm	(352+545+110+220+114+187)
OHCF + IOT + IFM + Inserter +GBC + CZ Folder + PR Finisher	143.7"	31.6 "	54.8"	1627 lbs
	3644.3 mm	803.5mm	1391.5mm	(352+545+110+99+220+114+187)
OHCF + IOT + IFM +GBC + Two Sided Trimmer + CZ Folder + PR Finisher	160.8"	31.6 "	54.8"	1788 lbs
	4084.3 mm	803.5mm	1391.5mm	(352+545+110+220+260+114+187)
OHCF + IOT + IFM + Inserter + GBC + Two Sided Trimmer + CZ Folder + PR Finisher	167.5"	31.6 "	54.8"	1887 lbs
	4249.3 mm	803.5mm	1391.5mm	(352+545+110+99+220+260+114+187)
OHCF + IOT + IFM + GBC + PR Booklet Maker Fin	129.2"	31.6"	54.8"	1458 lbs
	3282.3mm	803.5mm	1391.5mm	(352+545+110+220+ 231)
OHCF + IOT + IFM +Inserter + GBC + PR Booklet Maker Fin	135.9"	31.6"	54.8"	1557 lbs
	3447.3 mm	803.5mm	1391.5mm	(352+545+110+99+220+ 231)
OHCF + IOT + IFM + GBC + Two Sided Trimmer + PR Booklet Maker Fin	153"	31.6"	54.8"	1718 lbs
	3887.3 mm	803.5mm	1391.5mm	(352+545+110+220+260+231)
OHCF + IOT + IFM +Inserter + GBC + Two Sided Trimmer + PR Booklet Maker Fin	158.7"	31.6"	54.8"	1817 lbs
	4052.3 mm	803.5mm	1391.5mm	(352+545+110 +99+220+260+231)
OHCF + IOT + IFM +GBC + CZ Folder + PR Booklet Maker Fin	138.4"	31.6 "	54.8"	1572 lbs
	3514.3mm	803.5mm	1391.5mm	(352+545+110+220+114+231)
OHCF + IOT + IFM + Inserter +GBC + CZ Folder + PR Booklet Maker Fin	145"	31.6 "	54.8"	1671 lbs
	3683 mm	803.5mm	1391.5mm	(352+545+110+99+220+114+231)
OHCF + IOT + IFM +GBC + Two Sided Trimmer + CZ Folder + PR Booklet Maker Fin	162"	31.6 "	54.8"	1832 lbs
	4114.8 mm	803.5mm	1391.5mm	(352+545+110+220+260+114+231)

OHCF + IOT + IFM + Inserter +GBC + Two Sided Trimmer + CZ Folder + PR Booklet Maker Fin	168.7"	31.6 "	54.8"	1931 lbs
	4279.8 mm	803.5mm	1391.5mm	(352+545+110+99+220+260+114+231)
HCF + IOT + IFM + PR Booklet Maker Fin + SQFT	136.4"	31.6"	54.8"	1177 lbs
	3465.4mm	803.5mm	1391.5mm	(64+563+110+231+209)
HCF + IOT + IFM + Inserter + PR Booklet Maker Fin + SQFT	143"	31.6"	54.8"	1276 lbs
	3630.4 mm	803.5mm	1391.5mm	(64+563+110+99+231+209)
HCF + IOT + IFM + Two Sided Trimmer + PR Booklet Maker Fin + SQFT	160.2"	31.6"	54.8"	1437 lbs
	4069 mm	803.5mm	1391.5mm	(64+563+110+260+231+209)
HCF + IOT + IFM + PR Booklet Maker Fin + SQFT	166.9"	31.6"	54.8"	1536 lbs
	4239.3	803.5mm	1391.5mm	(64+563+110+99+260+231+209)
OHCF + IOT + IFM + PR Booklet Maker Fin + SQFT	153.7"	31.6"	54.8"	1447 lbs
	3904mm	803.5mm	1391.5mm	(352+545+110+231+209)
OHCF + IOT + IFM + Inserter + PR Booklet Maker Fin + SQFT	160.4"	31.6"	54.8"	1546 lbs
	4074.2 mm	803.5mm	1391.5mm	(352+545+110+99+231+209)
OHCF + IOT + IFM + Two Sided Trimmer PR Booklet Maker Fin + SQFT	177.5"	31.6"	54.8"	1707 lbs
	4508.5 mm	803.5mm	1391.5mm	(352+545+110+260+231+209)
OHCF + IOT + IFM + Inserter + Two Sided Trimmer + PR Booklet Maker Fin + SQFT	184.2"	31.6"	54.8"	1806 lbs
	4678.7 mm	803.5mm	1391.5mm	(352+545+110+99+260+231+209)
HCF + IOT + IFM + CZ Folder + PR Booklet Maker Fin + SQFT	145.5"	31.6 "	54.8"	1291 lbs
	3696 mm	803.5mm	1391.5mm	(64+563+110+99+114+231+209)
HCF + IOT + IFM + Inserter + CZ Folder + PR Booklet Maker Fin + SQFT	152.2"	31.6 "	54.8"	1390 lbs
	3861 mm	803.5mm	1391.5mm	(64+563+110+99+114+231+209)
HCF + IOT + IFM + Two Sided Trimmer + CZ Folder + PR Booklet Maker Fin + SQFT	169.3"	31.6 "	54.8"	1551 lbs
	4301 mm	803.5mm	1391.5mm	(64+563+110+260+114+231+209)
HCF + IOT + IFM + Inserter + Ttwo Sided Trimmer + CZ Folder + PR Booklet Maker Fin + SQFT	176"	31.6 "	54.8"	1650 lbs
	4466 mm	803.5mm	1391.5mm	(64+563+110+99+260+114+231+209)
OHCF + IOT + IFM + CZ Folder + PR Booklet Maker Fin + SQFT	162.8"	31.6 "	54.8"	1561 lbs
	4135.2mm	803.5mm	1391.5mm	(352+545+110+114+231+209)
OHCF + IOT + IFM + Inserter + CZ Folder + PR Booklet Maker Fin + SQFT	169.5"	31.6 "	54.8"	1660 lbs
	4300 mm	803.5mm	1391.5mm	(352+545+110+99+114+231+209)
OHCF + IOT + IFM + Two Sided Trimmer + CZ Folder + PR Booklet Maker Fin + SQFT	186.6"	31.6 "	54.8"	1821 lbs
	4740 mm	803.5mm	1391.5mm	(352+545+110+260+114+231+209)
OHCF + IOT + IFM + Inserter + Two Sided Trimmer + CZ Folder + PR Booklet Maker Fin + SQFT	193.3"	31.6 "	54.8"	1920 lbs
	4905 mm	803.5mm	1391.5mm	(352+545+110+99+260+114+231+209)
OHCF + IOT + IFM + GBC + PR Booklet Maker Fin + SQFT	171.2"	31.6"	54.8"	1667 lbs
	4348.3mm	803.5mm	1391.5mm	(352+545+110+220+231+209)
OHCF + IOT + IFM + Inserter + GBC + PR Booklet Maker Fin + SQFT	178"	31.6"	54.8"	1766 lbs
	4513.3 mm	803.5mm	1391.5mm	(352+545+110+99+ 220+231+209)
OHCF + IOT + IFM + GBC + Two Sided Trimmer+ PR Booklet Maker Fin + SQFT	195"	31.6"	54.8"	1927 lbs
	4953.3 mm	803.5mm	1391.5mm	(352+545+110+220+260+231+209)
OHCF + IOT + IFM + Inserter + GBC + Two Sided Trimmer + PR Booklet Maker Fin + SQFT	201.7"	31.6"	54.8"	2026 lbs
	5118.3 mm	803.5mm	1391.5mm	(352+545+110+99+220+260+231+209)
OHCF + IOT + IFM + GBC + CZ Folder + PR Booklet Maker Fin + SQFT	180.3"	31.6 "	54.8"	1781 lbs
	4580 mm	803.5mm	1391.5mm	(352+545+110+220+114+231+209)
OHCF + IOT + IFM + Inserter + GBC + CZ Folder + PR Booklet Maker Fin + SQFT	187"	31.6 "	54.8"	1880 lbs
	4745 mm	803.5mm	1391.5mm	(352+545+110+99+220+114+231+209)

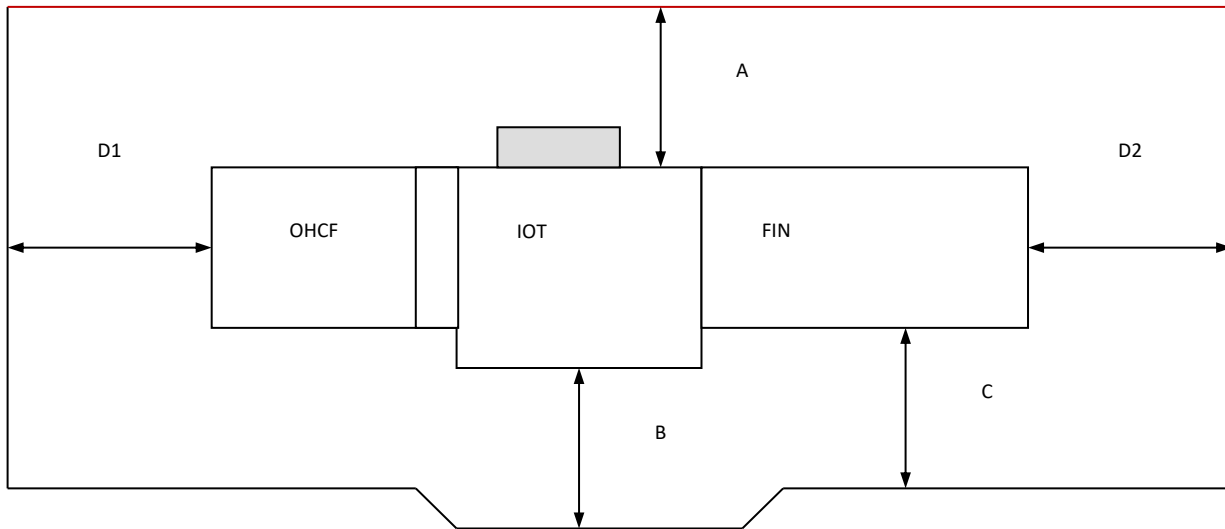
OHCF + IOT + IFM + GBC + Two Sided Trimmer + CZ Folder + PR Booklet Maker Fin + SQFT	204"	31.6 "	54.8"	2041 lbs
	5185 mm	803.5mm	1391.5mm	(352+545+110+220+260+114+231+209)
OHCF + IOT + IFM + Inserter + GBC + Two Sided Trimmer + CZ Folder + PR Booklet Maker Fin + SQFT	210.8"	31.6 "	54.8"	2140 lbs
	5350 mm	803.5mm	1391.5mm	(352+545+110+99+220+260+114+231+209)

IOT = Print Engine w/UI and UI Mtg. OCT = Offset Catch Tray HCF = High Capacity Feeder OHCF = Oversize High capacity feeder (1T/2T) IFM = Interface module BR Fin = Business Ready Finisher	BR Booklet Maker Finisher PR Finisher = Production Ready Finisher PR Booklet Maker Finisher CZ Folder = CZ Folder Option GBC = GBC Hole Punch Unit SQFT = Square Fold Trimmer
--	--

Service Envelope for the Xerox® C9065/C9070 Printer

The dimensions listed below provide the overall service space required, including the space to the nearest obstruction. The dimensions reflect both typical and hallway installations and are absolute minimums.

A minimum of 24 inches (609.6 mm) should be maintained between the back of the machine (Note: not the Xerox Integrated Fiery Color Server, or the Free-Flow Integrated Server if installed) and wall. Installation of the 1- or 2- Tray Oversize High Capacity Feeder and / or Production Ready Booklet Maker Finisher or Business Ready Booklet Maker Finisher results in a stationary system installation.



Service/Operational Envelope:
Width = D1 + Configuration Dimension + D2
Depth = A + Configuration Depth + B

	Service / Operational Space	Moveable Installation	Stationary Installation	Comment
A	Rear of Processor / System	10 " 254 mm	24 " 610 mm	
B	Front of main Processor	60" 1524 mm	46 " 1168 mm	
C	Front of HCF and Finisher	62" 1575 mm	48" 1219 mm	
D1	Left Side of System (w/o Printers servers)	13 " 330 mm	13 " 330 mm	
D2	Right side of System	24 " 610 mm	24 " 610 mm	
E	Allowable Height	78 " 1981 mm	78 " 1981 mm	

Service Envelope: Width = Dimensions + D1 + D2

Depth = 102" (2591 mm)

* Moveable installations can run with 10" (254 mm) between the rear of the system and a wall, but still require 102" total service area depth.

Installation Considerations

There should be a minimum of 78 inches (1,981 mm) clearance from the floor to the nearest overhead obstruction.

The Base Configuration unit weighs about 578lbs

Electrical requirements and space requirements must be satisfied before the equipment is delivered.

One network drop is required for installation



Warning

USA and Canada: Do not install this machine in a hallway or exit route that doesn't have 44 inches / 1.2 meters of space in addition to the normal space requirements in front of the machine. To conform with fire regulations this additional 44 inches / 1.2 meters of space is needed in front of the machine in hallway and exit routes.

Network Requirements

The customer is responsible for connecting and configuring the equipment on their network.

One network drop is required for typical installation.

Fax Telephone Line Requirements (Optional)

If the fax option is installed, the following telephone line requirements are applicable:

Telephone wall jack should be within 7' of the middle left side of the back of the unit.

Telephone Service Supported:

Sole-use, non-switchboard (direct dial)

RJ11 – 6 position, 4 pin modular jack

Single analog line.

For three line fax, a third telephone line meeting the requirements identified in items 1 and 2 above is required.

Fax over VOIP is supported

Convenience Stapler (Optional)

Requires separate outlet from one required for device. Refer to the above product electrical requirements for outlet type and requirements. The same electrical line as the device may be used; if no other devices are present on the line.

Energy Star

Energy Star is a government-backed program helping businesses and individuals protect the environment through superior energy efficiency. The C9065/C9070 is Energy Star 3.0 certified.

The C9065/C9070 automatically switches to a Low Power mode after an idle period. After an additional idle period, the machine switches to sleep mode, saving additional power. The customer can adjust the "Time to Low Power mode" and the "Time to Sleep Mode" as described in the documentation.

Supplies		Yield	Part Number
Toner Cartridges (Metered)	Black	30,000 pages ¹	006R01521
	Cyan	34,000 pages ¹	006R01524
	Magenta	32,000 pages ¹	006R01523
	Yellow	34,000 pages ¹	006R01522
Toner Cartridges (Sold)	Black	30,000 pages ¹	006R01734 (NA, EMEA) 006R01738 (EMEA)
	Cyan	34,000 pages ¹	006R01735 (NA, EMEA) 006R01739 (EMEA)
	Magenta	32,000 pages ¹	006R01736 (NA, EMEA) 006R01740 (EMEA)
	Yellow	34,000 pages ¹	006R01737 (NA, EMEA) 006R01741 (EMEA)
Black Drum Cartridge	1 Cartridge	190,000 pages ¹	013R00663
Color Drum Cartridge	1 Cartridge per Color	85,000 pages ¹	013R00664
Charge Corotron	For Black Drum	190,000 pages ¹	013R00650
Fuser	110V	200,000 pages ¹	008R13102
	220V	200,000 pages ¹	008R13065
Waste Toner Container	1 Cartridge	50,000 pages ¹	008R12990
Feed Roll Kits	1 Assembly	300,000 pages ¹	008R13169

1. Approximate pages. Declared Yield based on 5 page job size, 5.5% Area Coverage per seperation , using letter / A4 media. Yield will vary based on media size, image area coverage, job run length, media orientation and usage patterns.

Please contact the Xerox Service centres for more information or check www.xerox.com/supplies for information for re-ordering supplies. The product will be delivered with an initial supply of Toner as well as the SMart Kits (the Drum Cartridges). The supplies that should be stocked at the customer site in order to perform daily and periodic maintenance and to keep the device printing, will vary depending on monthly print volume, type of maintenance contract, and applications. Check with the local service and sales team for details.

Customer Agreement

I have reviewed this CEIG document and understand the specifications listed:

Customer

Xerox Authorized Representative